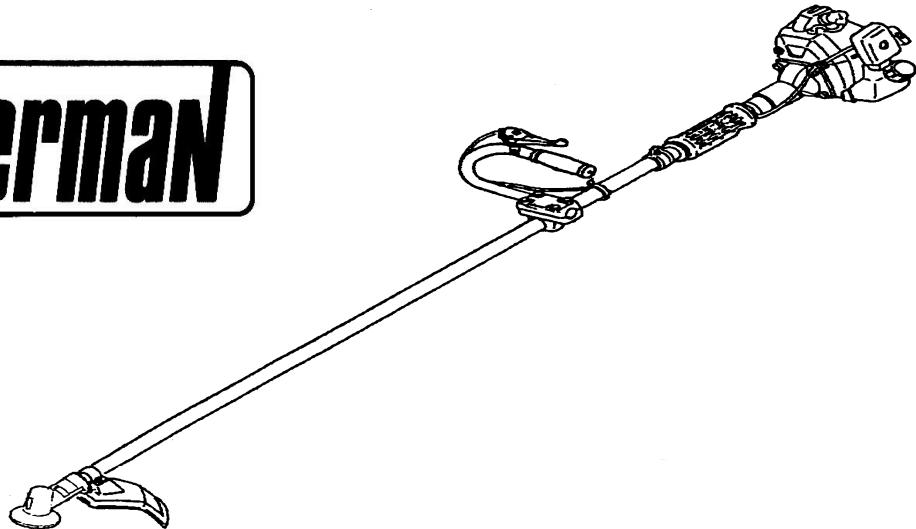


# BW4700-Y Commercial Line Trimmer 2005 Engine Kawasaki TH026D-BC53

The logo for Banner, featuring the word "Banner" in a bold, italicized, sans-serif font. The letters are black with a white outline, and the entire logo is enclosed in a black rectangular border.

**Read the following instructions before use. Keep this manual in a safe place - It contains very important data pertaining to this particular unit . Also make sure that the boxes below are filled in as those numbers are required for any Warranty claims.**

Engine Serial No.:	
Shaft Serial No.:	

## **Bulletin**

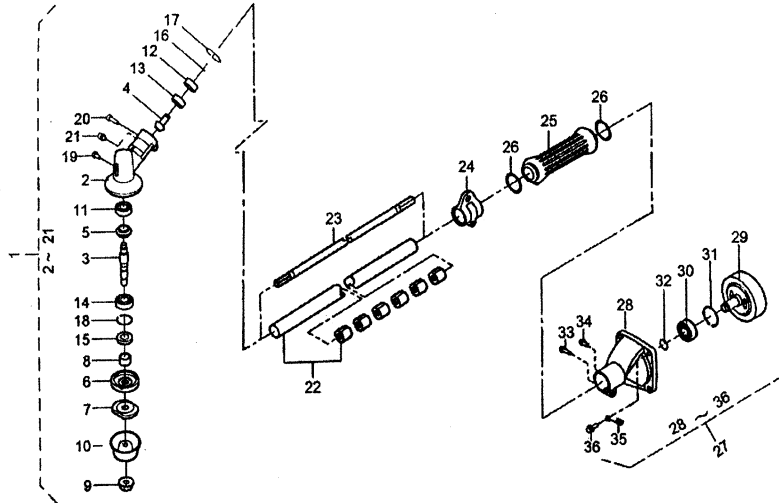
**Note the fuel/oil mixture on this unit is 50:01**

Only use a premium two-stroke engine oil that is formulated for modern, high performance, air-cooled two-stroke engines. Oil Specification: JASO Service Classification - FC Class. DO NOT use BIA or TCW2 cycle water cooled engine oils (this oil is for engines that operate at 600 degrees Fahrenheit, the Kawasaki TH026D engine operates at up to 900 degrees Fahrenheit). Prepare the gasoline/oil mixture in a clean approved portable container. Mix the oil with fresh premium or minimum 89 octane gasoline. Shake vigorously to ensure complete mixing

**Failing to follow these directions will cause irreparable damage that will void all warranties.**

## BW4700-Y Commercial Line Trimmer 2005

### Gear Case & Driving Apparatus



## BW4700-Y Commercial Line Trimmer 2005

### Gear Case & Driving Apparatus

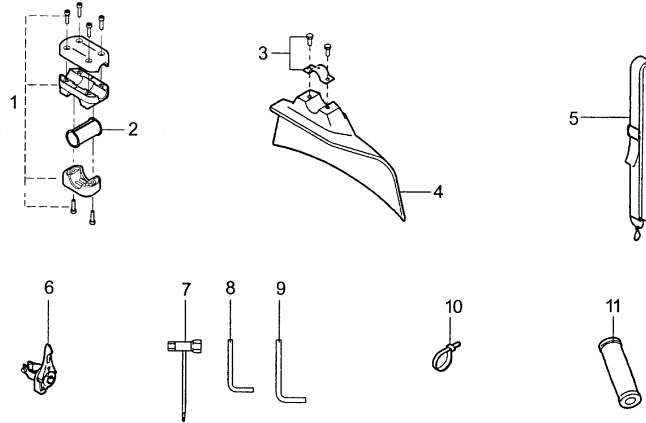
Ref	Part No.	Part Description	Qty.
1	71008-320	Gear Case Assembly	1
2	51001-267	Gear Case	1
3	64001-144	Spline Shaft	1
4	78002-174	Bevel Pinion	1
5	78001-150	Bevel Gear	1
6	1101-150	Holder A	1
7	11002-126	Holder B	1
8	61001-119	Spine Sleeve	1
9	31001-106	Saw Lock Nut 10mm	1
10	11027-119	Stabilizer	1
11	0913B0629	Bearing - 629 OP	1
12	0912B6000	Bearing - 6000 ZZ	1
13	0913B6000	Bearing - 6000 OP	1

**BW4700-Y Commercial Line Trimmer 2005****Gear Case & Driving Apparatus**

<b>Ref</b>	<b>Part No.</b>	<b>Part Description</b>	<b>Qty.</b>
14	0919B6201	Bearing - 6201 OPC3	1
15	61002-128	Oil Seal TC 17X32X8	1
16	0812V1000	C-Snap Ring 10	1
17	0811V2600	C-Snap Ring 26	1
18	0811V3200	C-Snap Ring 32	1
19	0322N0810	Bolt, Hex 8mm X 10mm	1
20	0412N0620	Socket Screw 6mm X 20mm	1
21	0413N0515	Socket Screw 5mm X 15mm w/sw	1
22	71130-189	Main Pipe w/ bushings	1
23	64011-250	Drive Shaft	1
24	71012-137	Hanger Band Assembly	1
25	36001-110	Main Grip	1
26	68013-136	Spring	2
27	71010-263	Clutch Case Assembly - Complete	1
28	51030-193	Clutch Case	1
29	11014-205	Clutch Drum	1
30	0912B6001	Bearing - 6001 ZZ	1
31	0811V2800	C-Snap Ring 35	1
32	0812V1200	C-Snap Ring 15	1
33	0412N0525	Socket Screw 5mm X 25mm	1
34	0413N0515	Socket Screw 5mm X 15mm w/sw	1
35	51104-143	Guide	1
36	0416N0620	Socket Screw 6mm X 20mm	4

## BW4700-Y Commercial Line Trimmer 2005

### Handle & Fittings



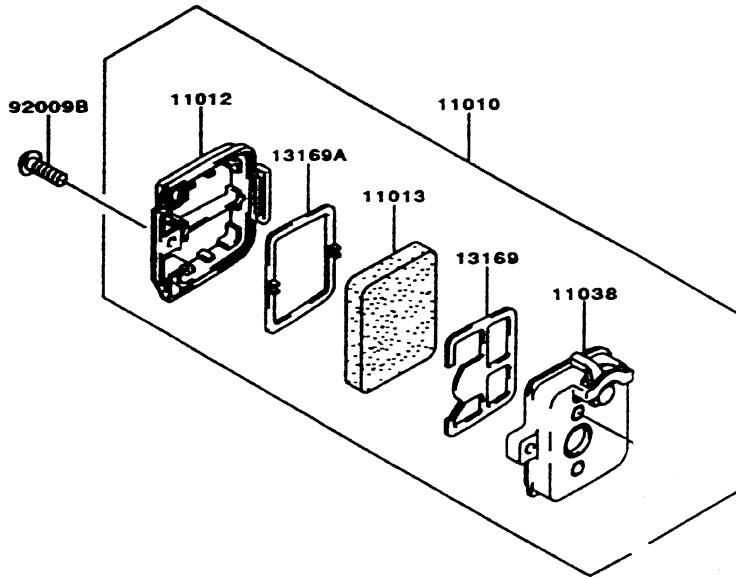
## BW4700-Y Commercial Line Trimmer 2005

### Handle & Fittings

Ref	Part No.	Part Description	Qty.
1	71001-153	Handle Joint Assembly	1
2	61023-192	Handle Joint Assembly - Sleeve	1
3	71038-171	Safety Guard Band Set	1
4	36046-141	Safety Guard	1
5	36063-185	Shoulder Strap	1
6	91010-155	Throttle Lever	1
7	66006-117	Box Spanner	1
8	66007-103	L Wrench	1
9	66007-104	L Wrench	1
10	68028-103	Wire Band	1
11	36007-129	Hook Handle - Rubber Grip	1
12		Hook Handle (Not Shown)	1
13		Rubber Grommet - Hook Handle	1

**BW4700-Y Commercial Line Trimmer 2005**

**Air Filter Assembly**



**BW4700-Y Commercial Line Trimmer 2005**

**Air Filter Assembly**

<b>Ref No</b>	<b>Part No.</b>	<b>Part Description</b>	<b>Qty.</b>
11010	11010-2191	Air Filter Assembly	1
11012	11012-2075	Air Filter - Cap	1
11013	11013-2081	Air Filter - Element	1
11038	11038-6002	Air Filter - Case	1
13169	13169-2308	Air Filter - Plate	1
13169A	13169-2385	Air Filter - Plate	1
14037	14037-2112	Air Filter - Screen	1
92009B	92009-2324	Air Filter - Screw	1